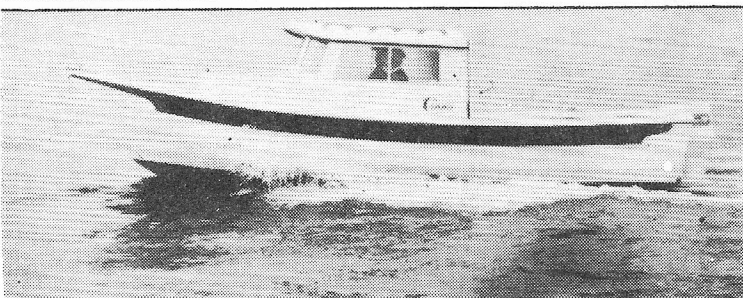
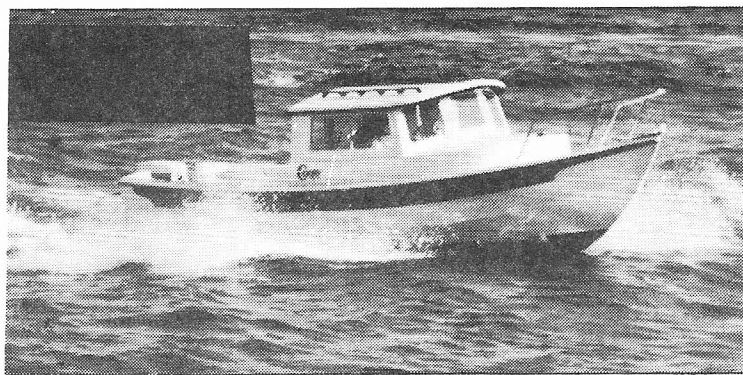
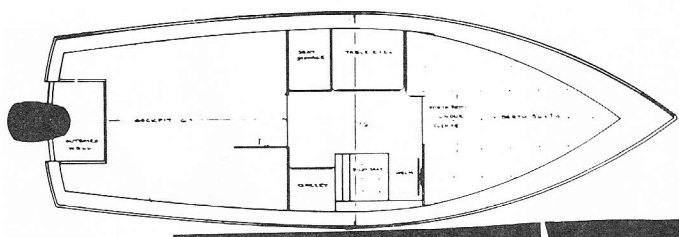
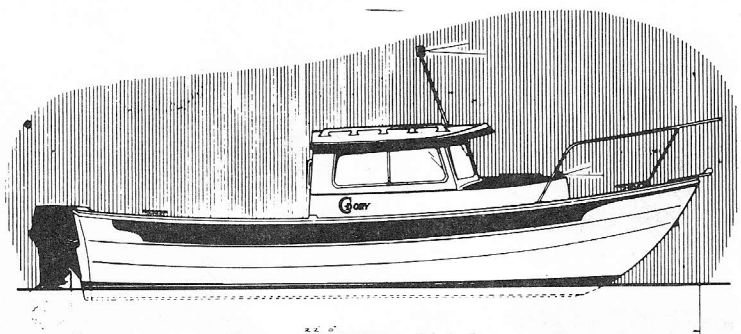


WORLD BOAT/SAMPAN EXPRESS 22' x 7' 6": COMPLIMENTARY/FIBERGLASS CONSTRUCTION

Design Lines Change: 4" increase in bottom width at transom.



The 22' is for rough salt water service, pleasure or commercial. She is the ideal fishing and cruising Dory, being in service along the West Coast, many of them having cruised to Alaska. She has 6'6" "V" berth with porta potti underneath and a cabin with 6'3½" headroom. Two cabin interiors are available. Plan "A" has a storage cabinet on the starboard side with a fold down pilot seat on top. The port side has a table and two seats facing each other. The plan "B" model omits the table and gives a storage cabinet and fold down seat that matches the starboard side. A lockable Alaska bulkhead is standard. The cockpit depth is 32".

Standard Equipment

- *Eight aluminum frame radius corner windows (side windows slide)
- *Alaska bulkhead with dead bolt lock
- *19" X 19" hatch
- *V-berth cushions, 4" foam
- *Self bailing cockpit drain (2)
- *Brass stem guard
- ***Black** accent stripes
- *Two Tone accents on decks
- *Teak hand rails, top & rear of house
- *Hard top cabin
- *Steering (Morse - their best stainless steel)
- *International lights
- *Stainless steel cleats
- *Porta Potti
- *Bow rail (welded stainless steel)
- *Rope locker in bow
- *Manual windshield wiper
- *Cabin light
- *Pilot seat & cabinet
- *Table

Specifications

- *Length - 22'
- *Beam - 7'6"
- *Hull draft - 6"
- *Overall height on trailer - 8'2"
- *Weight - boat, motor 70 hp - 1900 lbs.
- *Weight - boat, motor & trailer - 2900 lbs.
- *Overall length on trailer - 25'
- *Overall width on trailer - 8'

Suggested Power & Performance

Tests were performed on the measured nautical mile in salt water at Tacoma, Washington. Water conditions were calm. The course was run in both directions, and computed the average to obtain the following results.

With 70 hp Johnson, two persons, 12 gallon fuel, tool box and test equipment.

RPM	Time Min./Sec.	Speed Kts	G.P.H.	N.MPG.
2300	8:40	6.9	1.4	4.9
3500	4:26	13.5	2.3	5.9
4000	3:25	17.7	3.6	4.9
5000	2:28	24.3	5.3	4.6

Suggest: C/Flex: One Off Building System for the SAMPAN EXPRESS SERIES OF BOAT PLANS: SEAMAN FIBERGLASS, INC., P. O. Box 13704, New Orleans, LA 70815